



G001766

## Manual Call Point IP67 **Salwico MCP-C (GB)**

Part no 5200014-01A

System: Salwico Cargo, Salwico Cruise, Salwico Workboat,  
Salwico Yacht, Salwico RoPax, CS4000, ServoFighter, C300,  
C303, C308, C316

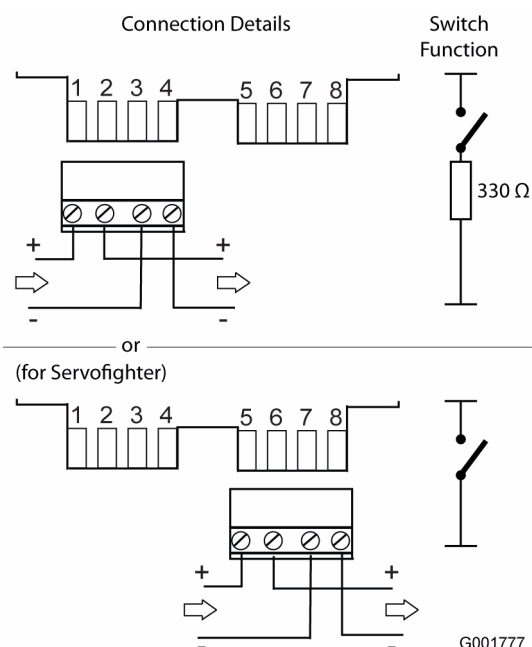
### General Description

The MCP-C is a manual call point for outdoor environment and is designed for the Salwico conventional fire alarm systems. The selected material PC/ABS and the encapsulation, with ingress protection IP67, makes it very suitable for harsh environment. Pressing the glass causing it to crack activates the fire alarm. A protective plastic coating on the glass prevents operator injury. The call point can be tested with a special key included in the delivery.

### Data

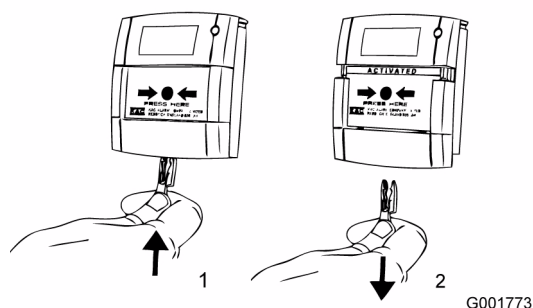
Nominal voltage	24 VDC
Working voltage	16-30 VDC
Supervising current	0 mA
Alarm current	~90 mA
Ingress protection	IP67
Temperature range	-25°C to +70°C
Ambient humidity	0 to 95% RH
Material	PC/ABS
Colour	Red
Weight	240 g
Cable dimension	Ø6-14 mm
Certified according to	0832
Spare glasses (10pcs.)	Part no. 5200075-00A

### Connection

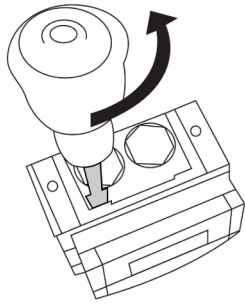


**Note!**  
After the last section unit, add an End of line resistor between terminals 1 and 2 or 5 and 6 (for servofighter) according to system specification.

### Test



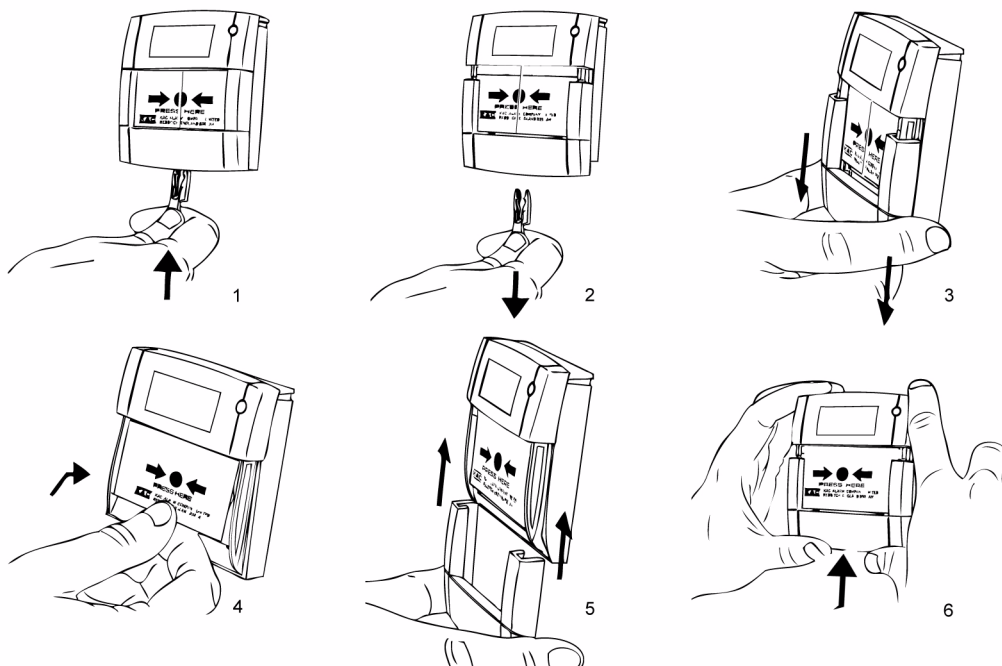
## Cover removal



G003072

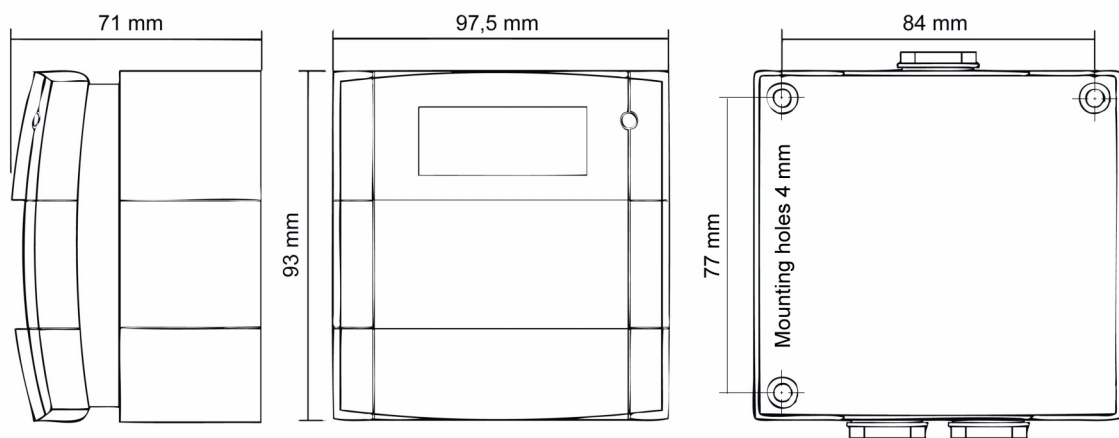
Remove the four cover fixing screws. Place the edge of a large flat bladed screwdriver into the slot between the cover and back box, as shown in picture, and gently twist until the latches are disengaged. Pull cover away from the back box.

## Change Glass



G001779

## Dimensions (mm)



G001782